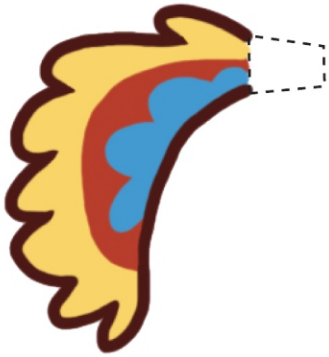
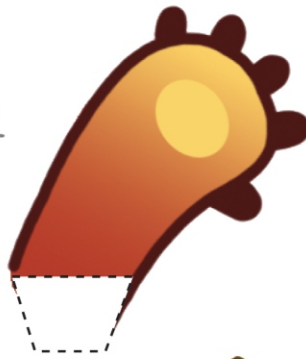


PART 1:

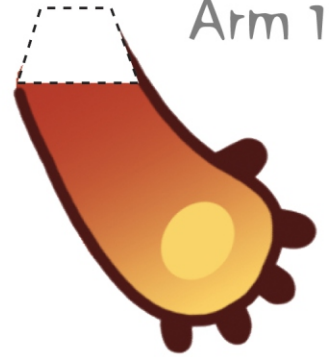
Tail



Arm 2

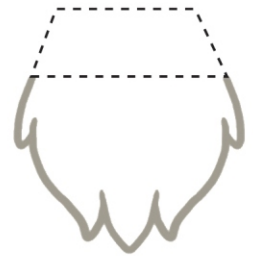


Arm 1

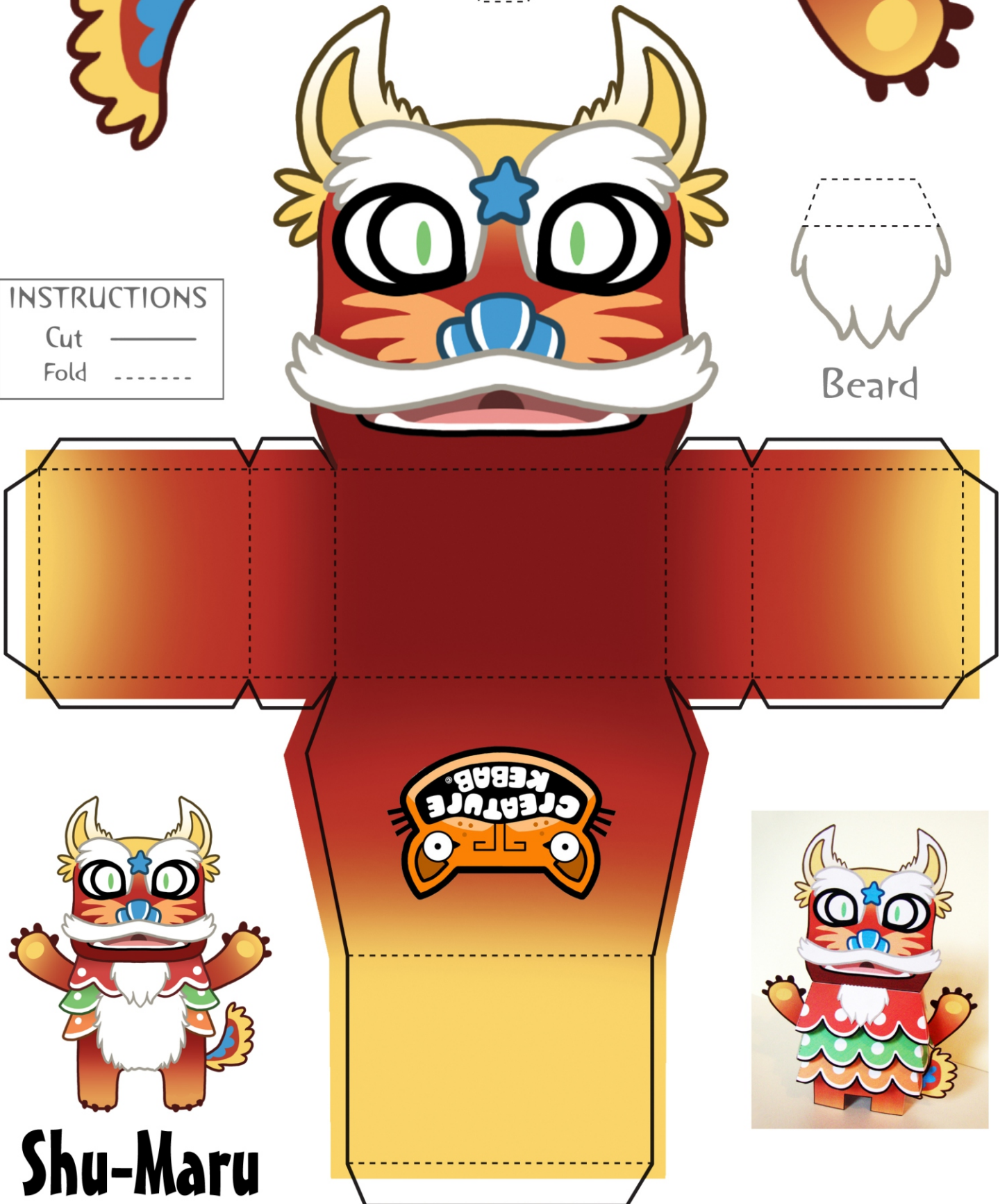


INSTRUCTIONS

Cut ———
Fold - - - - -



Beard



Shu-Maru

PART 2:

When glueing Shu-Maru's frills on to his body, start with the orange at the bottom, then the green a little further up, and finally glue on his red frill between the head and the body. Don't forget to sandwich his beard in at this point too!

INSTRUCTIONS

Cut ———

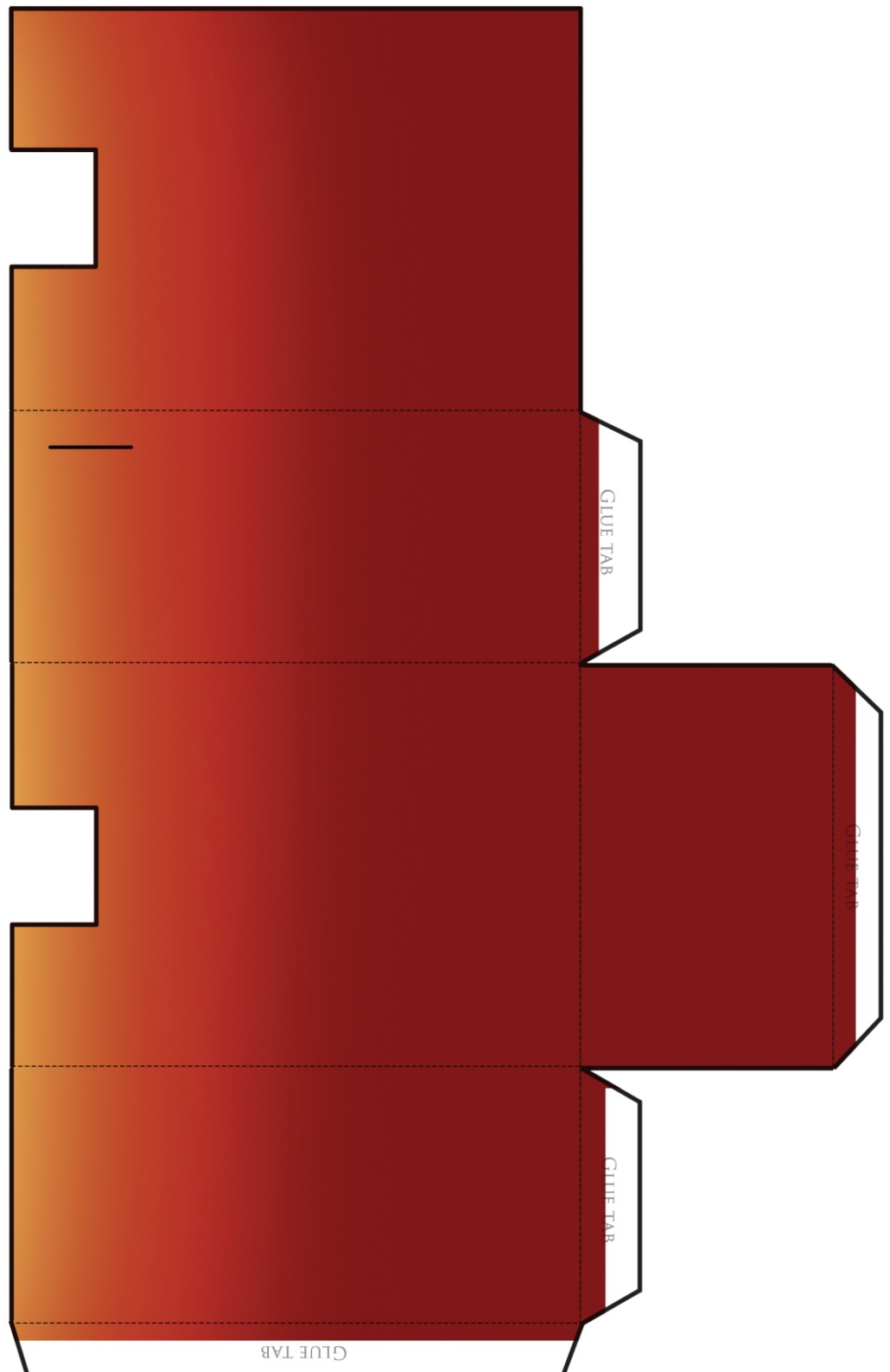
Fold - - - - -

Before you glue the body together, place the tail through the slot here --->

Place Shu-Maru's arms through the slots on his red frill!



Shu-Maru



PART 3:



INSTRUCTIONS

Cut ———

Fold - - - - -

Shu-Maru

